

# MYH-pan (Acetyl Lys505) Rabbit Polyclonal Antibody

MYH-pan (Acetyl Lys505) Rabbit Polyclonal Antibody

Catalog # AP93578

## Product Information

Application	WB, IHC, E
Primary Accession	<a href="#">P12882/Q9UKX2/P11055/Q9Y623/P13533/P12883/P13535</a>
Reactivity	Rat, Human, Mouse
Host	Polyclonal, Rabbit,IgG
Clonality	Polyclonal

## Additional Information

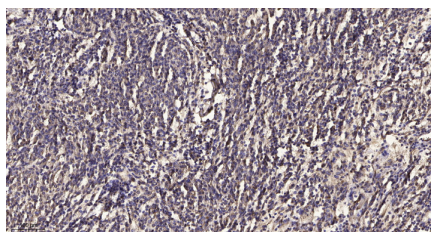
Dilution	WB~~1:1000 IHC~~1:100~500 E~~N/A
Storage Conditions	-20°C

## Protein Information

## Background

Myosin is a major contractile protein which converts chemical energy into mechanical energy through the hydrolysis of ATP. Myosin is a hexameric protein composed of a pair of myosin heavy chains (MYH) and two pairs of nonidentical light chains. Myosin heavy chains are encoded by a multigene family. In mammals at least 10 different myosin heavy chain (MYH) isoforms have been described from striated, smooth, and nonmuscle cells. These isoforms show expression that is spatially and temporally regulated during development. [provided by RefSeq, Jul 2008],

## Images



Immunohistochemical analysis of paraffin-embedded human meningioma. 1, Antibody was diluted at 1:200(4° overnight). 2, Tris-EDTA,pH9.0 was used for antigen retrieval. 3,Secondary antibody was diluted at 1:200(room temperature, 45min).

Please note: All products are 'FOR RESEARCH USE ONLY. NOT FOR USE IN DIAGNOSTIC OR THERAPEUTIC PROCEDURES'.