

RNAS7 Rabbit Polyclonal Antibody

RNAS7 Rabbit Polyclonal Antibody

Catalog # AP93571

Product Information

Application	WB, IHC, E
Primary Accession	Q9H1E1
Reactivity	Rat, Human, Mouse
Host	Polyclonal, Rabbit, IgG
Clonality	Polyclonal
Calculated MW	17419

Additional Information

Gene ID	84659
Other Names	Ribonuclease 7, RNase 7, 3.1.27.-, Skin-derived antimicrobial protein 2, SAP-2, RNASE7
Dilution	WB~~1:1000 IHC~~1:100~500 E~~N/A
Storage Conditions	-20°C

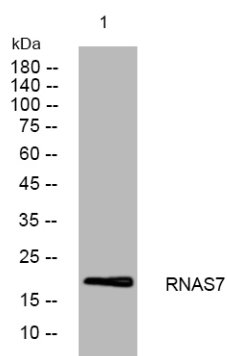
Protein Information

Name	RNASE7
Function	Exhibits a potent RNase activity (PubMed: 12244054 , PubMed: 12527768 , PubMed: 17150966). Has broad-spectrum antimicrobial activity against many pathogenic microorganisms including uropathogenic E.coli (UPEC), and remarkably potent activity (lethal dose of 90% 12244054 , PubMed: 12527768 , PubMed: 17150966 , PubMed: 25075772 , PubMed: 33818125). Causes loss of bacterial membrane integrity (PubMed: 17150966). Probably contributes to urinary tract sterility (PubMed: 25075772). Bactericidal activity is independent of RNase activity (PubMed: 17150966).
Cellular Location	Secreted. Note=Detected in urine
Tissue Location	Expressed in collecting ducts in kidney, and in apical uroepithelium in bladder (at protein level) (PubMed: 25075772) Expressed in various epithelial tissues including skin, respiratory tract, genito-urinary tract and, at a low level, in the gut (PubMed: 12244054). Expressed in liver, kidney, skeletal muscle and heart (PubMed: 12527768).

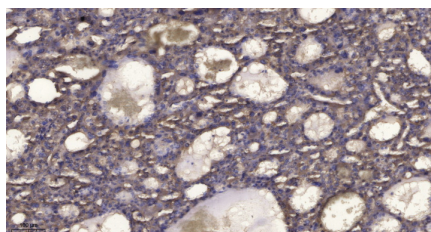
Background

The protein encoded by this gene belongs to the pancreatic ribonuclease family, a subset of the ribonuclease A superfamily. The protein has broad-spectrum antimicrobial activity against bacteria and fungi. [provided by RefSeq, Oct 2014],

Images



Western blot analysis of lysates from HpeG2 cells, primary antibody was diluted at 1:1000, 4° over night



Immunohistochemical analysis of paraffin-embedded human liver cancer. 1, Antibody was diluted at 1:200(4° overnight). 2, Tris-EDTA,pH9.0 was used for antigen retrieval. 3,Secondary antibody was diluted at 1:200(room temperature, 45min).

Please note: All products are 'FOR RESEARCH USE ONLY. NOT FOR USE IN DIAGNOSTIC OR THERAPEUTIC PROCEDURES'.