

PMS2L Rabbit Polyclonal Antibody

PMS2L Rabbit Polyclonal Antibody

Catalog # AP93568

Product Information

Application	WB, IHC
Primary Accession	Q68D20
Reactivity	Rat, Human, Mouse
Host	Polyclonal, Rabbit, IgG
Clonality	Polyclonal
Calculated MW	20909

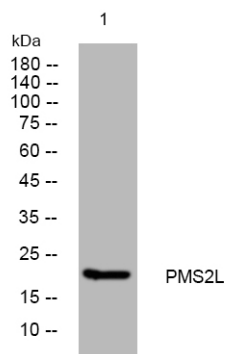
Additional Information

Other Names	Protein PMS2CL, PMS2-C terminal-like protein, PMS2CL, PMS2P13
Dilution	WB~~1:1000 IHC~~1:100~500
Storage Conditions	-20°C

Protein Information

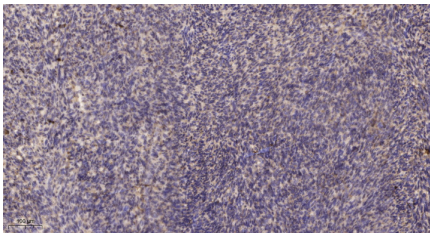
Name	PMS2CL
Synonyms	PMS2P13

Images



Western blot analysis of lysates from KB cells, primary antibody was diluted at 1:1000, 4° over night

Immunohistochemical analysis of paraffin-embedded human uterus. 1, Antibody was diluted at 1:200 (4° overnight). 2, Tris-EDTA, pH 9.0 was used for antigen



retrieval. 3,Secondary antibody was diluted at 1:200(room temperature, 45min).

Please note: All products are 'FOR RESEARCH USE ONLY. NOT FOR USE IN DIAGNOSTIC OR THERAPEUTIC PROCEDURES'.