

CHMP7 Rabbit Polyclonal Antibody

CHMP7 Rabbit Polyclonal Antibody

Catalog # AP93554

Product Information

Application	WB
Primary Accession	Q8WUX9
Reactivity	Human, Mouse
Host	Polyclonal, Rabbit, IgG
Clonality	Polyclonal
Calculated MW	50911

Additional Information

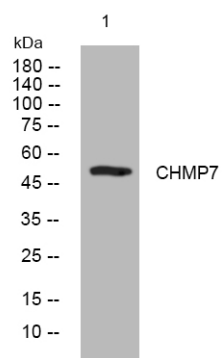
Gene ID	91782
Other Names	Charged multivesicular body protein 7, Chromatin-modifying protein 7, CHMP7
Dilution	WB~~1:1000
Storage Conditions	-20°C

Protein Information

Name	CHMP7
Function	ESCRT-III-like protein required to recruit the ESCRT-III complex to the nuclear envelope (NE) during late anaphase (PubMed: 26040712). Together with SPAST, the ESCRT-III complex promotes NE sealing and mitotic spindle disassembly during late anaphase (PubMed: 26040712 , PubMed: 28242692). Recruited to the reforming NE during anaphase by LEMD2 (PubMed: 28242692). Plays a role in the endosomal sorting pathway (PubMed: 16856878).
Cellular Location	Cytoplasm. Nucleus envelope. Nucleus envelope. Note=Diffused localization, with some punctate distribution, especially in the perinuclear area (PubMed: 16856878). Localizes to the reforming nuclear envelope on chromatin disks during late anaphase (PubMed: 26040712 , PubMed: 28242692).

Images

Western blot analysis of lysates from VEC cells, primary



antibody was diluted at 1:1000, 4°over night

Please note: All products are 'FOR RESEARCH USE ONLY. NOT FOR USE IN DIAGNOSTIC OR THERAPEUTIC PROCEDURES'.