

PR20C Rabbit Polyclonal Antibody

PR20C Rabbit Polyclonal Antibody

Catalog # AP93549

Product Information

Application	WB
Primary Accession	P86479
Reactivity	Rat, Human, Mouse
Host	Polyclonal, Rabbit, IgG
Clonality	Polyclonal
Calculated MW	23262

Additional Information

Gene ID	122183;729233;729240;729246;729250
Other Names	Proline-rich protein 20C, PRR20C (HGNC:37221)
Dilution	WB~~1:1000
Storage Conditions	-20°C

Protein Information

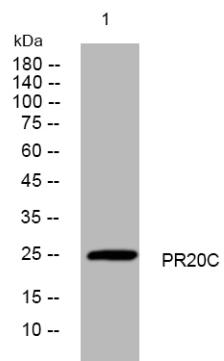
Name	PRR20C (HGNC:37221)
------	---------------------------------------

Background

This gene is one of five identical loci in a cluster on chromosome 13q21.1. The predicted protein is proline-rich and contains several dopamine D4 receptor signatures and PRINTS domains. [provided by RefSeq, Oct 2008],

Images

Western blot analysis of lysates from DU145 cells,
primary antibody was diluted at 1:1000, 4° over night



Please note: All products are 'FOR RESEARCH USE ONLY. NOT FOR USE IN DIAGNOSTIC OR THERAPEUTIC PROCEDURES'.