

KISHA Rabbit Polyclonal Antibody

KISHA Rabbit Polyclonal Antibody

Catalog # AP93545

Product Information

Application	IHC, IF
Primary Accession	Q8TBQ9
Reactivity	Human, Mouse
Host	Polyclonal, Rabbit,IgG
Clonality	Polyclonal
Calculated MW	8060

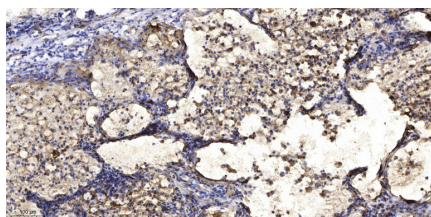
Additional Information

Gene ID	153339
Other Names	Protein kish-A, Transmembrane protein 167, Transmembrane protein 167A, TMEM167A, TMEM167
Dilution	IHC~~1:100~500 IF~~1:50~200
Storage Conditions	-20°C

Protein Information

Name	TMEM167A
Synonyms	TMEM167
Function	Involved in the early part of the secretory pathway.
Cellular Location	Golgi apparatus membrane; Single-pass type I membrane protein

Images



Immunohistochemical analysis of paraffin-embedded human Squamous cell carcinoma of lung. 1, Antibody was diluted at 1:200(4° overnight). 2, Tris-EDTA,pH9.0 was used for antigen retrieval. 3,Secondary antibody was diluted at 1:200(room temperature, 45min).

Please note: All products are 'FOR RESEARCH USE ONLY. NOT FOR USE IN DIAGNOSTIC OR THERAPEUTIC PROCEDURES'.