

CPLX4 Rabbit Polyclonal Antibody

CPLX4 Rabbit Polyclonal Antibody

Catalog # AP93541

Product Information

Application	WB
Primary Accession	Q7Z7G2
Reactivity	Human, Mouse
Host	Polyclonal, Rabbit, IgG
Clonality	Polyclonal
Calculated MW	18336

Additional Information

Gene ID	339302
Other Names	Complexin-4, Complexin IV, CPX IV, CPLX4
Dilution	WB~~1:1000
Storage Conditions	-20°C

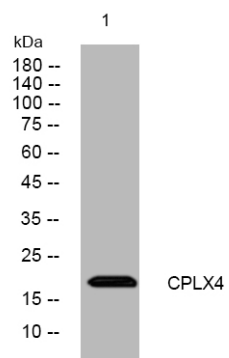
Protein Information

Name	CPLX4
Function	Complexin that regulates SNARE protein complex-mediated synaptic vesicle fusion (By similarity). Required for the maintenance of synaptic ultrastructure in the adult retina (By similarity). Positively regulates synaptic transmission through synaptic vesicle availability and exocytosis of neurotransmitters at photoreceptor ribbon synapses in the retina (By similarity). Suppresses tonic photoreceptor activity and baseline 'noise' by suppression of Ca(2+) vesicle tonic release and the facilitation of evoked synchronous and asynchronous Ca(2+) vesicle release (By similarity).
Cellular Location	Synapse {ECO:0000250 UniProtKB:Q80WM3}. Cell membrane; Lipid-anchor {ECO:0000250 UniProtKB:Q80WM3}. Note=Enriched at the synaptic terminal. {ECO:0000250 UniProtKB:Q80WM3}

Background

This gene likely encodes a member of the complexin family. The encoded protein may be involved in synaptic vesicle exocytosis. [provided by RefSeq, Jan 2009],

Images



Western blot analysis of lysates from MCF-7 cells, primary antibody was diluted at 1:1000, 4°over night

Please note: All products are 'FOR RESEARCH USE ONLY. NOT FOR USE IN DIAGNOSTIC OR THERAPEUTIC PROCEDURES'.