

SPIT3 Rabbit Polyclonal Antibody

SPIT3 Rabbit Polyclonal Antibody

Catalog # AP93539

Product Information

Application	IHC, IF
Primary Accession	P49223
Reactivity	Rat, Human, Mouse
Host	Polyclonal, Rabbit, IgG
Clonality	Polyclonal
Calculated MW	10252

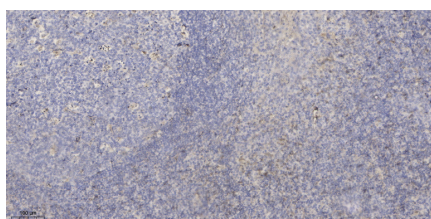
Additional Information

Gene ID	10816
Other Names	Kunitz-type protease inhibitor 3, HKIB9, SPINT3
Dilution	IHC~~1:100~500 IF~~1:50~200
Storage Conditions	-20°C

Protein Information

Name	SPINT3
Cellular Location	Secreted.

Images



Immunohistochemical analysis of paraffin-embedded human tonsil. 1, Antibody was diluted at 1:200(4° overnight). 2, Tris-EDTA, pH9.0 was used for antigen retrieval. 3, Secondary antibody was diluted at 1:200(room temperature, 30min).

Please note: All products are 'FOR RESEARCH USE ONLY. NOT FOR USE IN DIAGNOSTIC OR THERAPEUTIC PROCEDURES'.