

ASTL Rabbit Polyclonal Antibody

ASTL Rabbit Polyclonal Antibody

Catalog # AP93537

Product Information

Application	WB
Primary Accession	Q6HA08
Reactivity	Human, Mouse
Host	Polyclonal, Rabbit,IgG
Clonality	Polyclonal
Calculated MW	45936

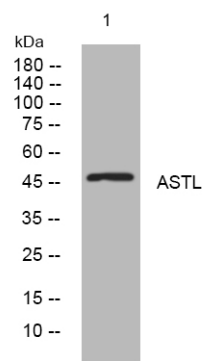
Additional Information

Gene ID	431705
Other Names	Astacin-like metalloendopeptidase, 3.4.-.-, Oocyte astacin, Ovastacin, ZP2-proteinase, ASTL (HGNC:31704)
Dilution	WB~~1:1000
Storage Conditions	-20°C

Protein Information

Name	ASTL (HGNC:31704)
Function	Oocyte-specific oolemmal receptor involved in sperm and egg adhesion and fertilization. Plays a role in the polyspermy inhibition. Probably acts as a protease for the post-fertilization cleavage of ZP2. Cleaves the sperm-binding ZP2 at the surface of the zona pellucida after fertilization and cortical granule exocytosis, rendering the zona pellucida unable to support further sperm binding.
Cellular Location	Cytoplasm {ECO:0000250 UniProtKB:Q6HA09}. Cell membrane {ECO:0000250 UniProtKB:Q6HA09}. Cytoplasmic vesicle, secretory vesicle, Cortical granule {ECO:0000250 UniProtKB:Q6HA09}. Note=Probably exocytosed from cortical granules during post-fertilization. Detected throughout the ooplasm of germinal vesicle stage oocytes in early bilaminar secondary follicles at postnatal (PN) day 3. Detected in the microvillar domain of the oolemma in arrested ovulated secondary oocytes and in the first polar body prior to fertilization. Upon fertilization, detected in the perivitelline space (PVS) and occasionally on the oolemma in 2-cell through morulae stages Colocalizes with SPACA3 at the microvillar domain of the oolemma and in the perivitelline space (PVS). {ECO:0000250 UniProtKB:Q6HA09}

Images



Western blot analysis of lysates from HEK293 cells, primary antibody was diluted at 1:1000, 4°over night

Please note: All products are 'FOR RESEARCH USE ONLY. NOT FOR USE IN DIAGNOSTIC OR THERAPEUTIC PROCEDURES'.