

OTOGL Rabbit Polyclonal Antibody

OTOGL Rabbit Polyclonal Antibody

Catalog # AP93535

Product Information

Application	WB
Primary Accession	Q3ZCN5
Reactivity	Rat, Human, Mouse
Host	Polyclonal, Rabbit,IgG
Clonality	Polyclonal
Calculated MW	264612

Additional Information

Gene ID	283310
Other Names	Otogelin-like protein, OTOGL, C12orf64
Dilution	WB~~1:1000
Storage Conditions	-20°C

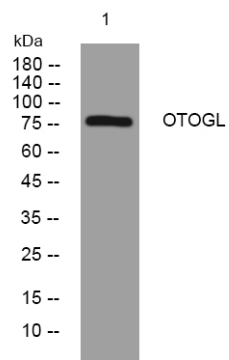
Protein Information

Name	OTOGL
Synonyms	C12orf64
Cellular Location	Secreted.
Tissue Location	Expressed at high levels in fetal inner ear and heart. Low levels in fetal skeletal muscle, kidney, spleen and colon Not detected in fetal liver, lung, brain, nor in fetal stomach. In adult tissues, highest levels in brain, kidney, heart and retina Relatively low levels in lung, spleen and duodenum. Not detected in adult skeletal muscle, liver, nor testis

Background

The protein encoded by this gene belongs to the otogelin family. This gene is expressed in the inner ear of vertebrates with the highest level of expression seen at the embryonic stage and lowest in adult. Knockdown studies in zebrafish suggest that this gene is essential for normal inner ear function. Mutations in this gene are associated with autosomal recessive deafness. [provided by RefSeq, Dec 2012],

Images



Western blot analysis of lysates from PC-12 cells, primary antibody was diluted at 1:1000, 4°over night

Please note: All products are 'FOR RESEARCH USE ONLY. NOT FOR USE IN DIAGNOSTIC OR THERAPEUTIC PROCEDURES'.