

CX028 Rabbit Polyclonal Antibody

CX028 Rabbit Polyclonal Antibody

Catalog # AP93534

Product Information

Application	IHC, IF
Primary Accession	A6NGU7
Reactivity	Rat, Human, Mouse
Host	Polyclonal, Rabbit, IgG
Clonality	Polyclonal
Calculated MW	7222

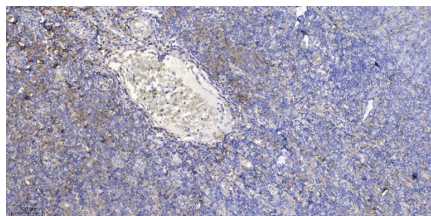
Additional Information

Other Names	Putative uncharacterized protein encoded by LINC01546 {ECO:0000312 HGNC:HGNC:27336}, LINC01546 (HGNC:27336)
Dilution	IHC~~1:100~500 IF~~1:50~200
Storage Conditions	-20°C

Protein Information

Name	LINC01546 (HGNC:27336)
------	--

Images



Immunohistochemical analysis of paraffin-embedded human tonsil. 1, Antibody was diluted at 1:200(4° overnight). 2, Tris-EDTA,pH9.0 was used for antigen retrieval. 3,Secondary antibody was diluted at 1:200(room temperature, 30min).

Please note: All products are 'FOR RESEARCH USE ONLY. NOT FOR USE IN DIAGNOSTIC OR THERAPEUTIC PROCEDURES'.