

CA212 Rabbit Polyclonal Antibody

CA212 Rabbit Polyclonal Antibody

Catalog # AP93529

Product Information

| | |
|-------------------|-------------------------|
| Application | IHC, IF |
| Primary Accession | Q96EX1 |
| Reactivity | Rat, Human, Mouse |
| Host | Polyclonal, Rabbit, IgG |
| Clonality | Polyclonal |
| Calculated MW | 10799 |

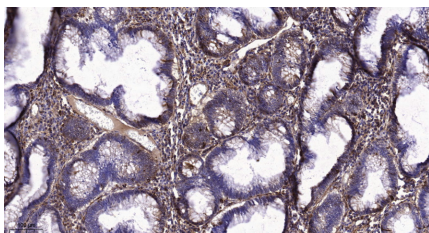
Additional Information

| | |
|--------------------|--|
| Gene ID | 113444 |
| Other Names | Small integral membrane protein 12, SMIM12, C1orf212 |
| Dilution | IHC~~1:100~500 IF~~1:50~200 |
| Storage Conditions | -20°C |

Protein Information

| | |
|-------------------|--|
| Name | SMIM12 |
| Synonyms | C1orf212 |
| Cellular Location | Membrane; Single-pass membrane protein |

Images



Immunohistochemical analysis of paraffin-embedded human colon cancer. 1, Tris-EDTA, pH 9.0 was used for antigen retrieval. 2 Antibody was diluted at 1:200 (4° overnight). 3, Secondary antibody was diluted at 1:200 (room temperature, 45 min).