

# AR26L Rabbit Polyclonal Antibody

AR26L Rabbit Polyclonal Antibody

Catalog # AP93524

## Product Information

<b>Application</b>	WB
<b>Primary Accession</b>	<a href="#">Q6NSI1</a>
<b>Reactivity</b>	Rat, Human, Mouse
<b>Host</b>	Polyclonal, Rabbit, IgG
<b>Clonality</b>	Polyclonal
<b>Calculated MW</b>	35437

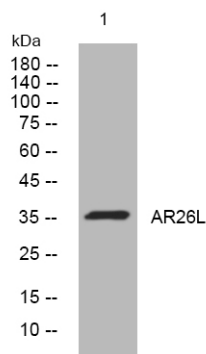
## Additional Information

<b>Other Names</b>	Putative ankyrin repeat domain-containing protein 26-like protein, ANKRD26P1
<b>Dilution</b>	WB~~1:1000
<b>Storage Conditions</b>	-20°C

## Protein Information

<b>Name</b>	ANKRD26P1
-------------	-----------

## Images



Please note: All products are 'FOR RESEARCH USE ONLY. NOT FOR USE IN DIAGNOSTIC OR THERAPEUTIC PROCEDURES'.