

CK010 Rabbit Polyclonal Antibody

CK010 Rabbit Polyclonal Antibody

Catalog # AP93522

Product Information

Application	IHC, IF
Primary Accession	P61165
Reactivity	Human, Mouse
Host	Polyclonal, Rabbit, IgG
Clonality	Polyclonal
Calculated MW	9079

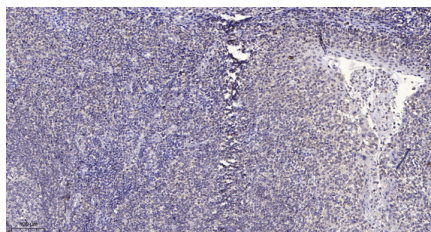
Additional Information

Gene ID	746
Other Names	Dolichyl-diphosphooligosaccharide--protein glycosyltransferase subunit TMEM258, Oligosaccharyl transferase subunit TMEM258, Transmembrane protein 258, TMEM258 (HGNC:1164), C11orf10
Dilution	IHC~~1:100~500 IF~~1:50~200
Storage Conditions	-20°C

Protein Information

Name	TMEM258 (HGNC:1164)
Synonyms	C11orf10
Function	Subunit of the oligosaccharyl transferase (OST) complex that catalyzes the initial transfer of a defined glycan (Glc(3)Man(9)GlcNAc(2) in eukaryotes) from the lipid carrier dolichol- pyrophosphate to an asparagine residue within an Asn-X-Ser/Thr consensus motif in nascent polypeptide chains, the first step in protein N-glycosylation (PubMed: 31831667). N-glycosylation occurs cotranslationally and the complex associates with the Sec61 complex at the channel-forming translocon complex that mediates protein translocation across the endoplasmic reticulum (ER). All subunits are required for a maximal enzyme activity (PubMed: 26472760 , PubMed: 27974209). Involved in ER homeostasis in the colonic epithelium (By similarity).
Cellular Location	Membrane; Multi- pass membrane protein. Endoplasmic reticulum. Cytoplasm
Tissue Location	Ubiquitously expressed.

Images



Immunohistochemical analysis of paraffin-embedded human tonsil. 1, Antibody was diluted at 1:200(4° overnight). 2, Tris-EDTA,pH9.0 was used for antigen retrieval. 3,Secondary antibody was diluted at 1:200(room temperature, 30min).

Please note: All products are 'FOR RESEARCH USE ONLY. NOT FOR USE IN DIAGNOSTIC OR THERAPEUTIC PROCEDURES'.