

CBWD2 Rabbit Polyclonal Antibody

CBWD2 Rabbit Polyclonal Antibody

Catalog # AP93518

Product Information

Application	WB
Primary Accession	Q8IUF1
Reactivity	Rat, Human, Mouse
Host	Polyclonal, Rabbit, IgG
Clonality	Polyclonal
Calculated MW	44034

Additional Information

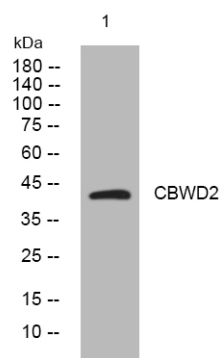
Gene ID	150472
Other Names	Zinc-regulated GTPase metalloprotein activator 1B, 3.6.5., ZNG1B {ECO:0000303 PubMed:35584702, ECO:0000312 HGNC:HGNC:17907}
Dilution	WB~~1:1000
Storage Conditions	-20°C

Protein Information

Name	ZNG1B {ECO:0000303 PubMed:35584702, ECO:0000312 HGNC:HGNC:17907}
Function	Zinc chaperone that directly transfers zinc cofactor to target metalloproteins, thereby activating them. Catalyzes zinc insertion into the active site of methionine aminopeptidase METAP1, which function to cleave the initiator methionine from polypeptides during or after protein translation. Mechanistically, the N-terminal psi-PxLVp motif binds to the C6H2-type zinc finger of inactive form of METAP1. After formation of the docked complex, zinc is transferred from the CXCC motif in the GTPase domain of ZNG1B to the zinc binding site in the peptidase domain of METAP1 in a process requiring GTP hydrolysis. GTP/GDP exchange is required for release of active METAP1.
Cellular Location	Nucleus {ECO:0000250 UniProtKB:Q8VEH6}.

Images

Western blot analysis of lysates from U2OS cells, primary antibody was diluted at 1:1000, 4°over night



Please note: All products are 'FOR RESEARCH USE ONLY. NOT FOR USE IN DIAGNOSTIC OR THERAPEUTIC PROCEDURES'.