

TRY6 Rabbit Polyclonal Antibody

TRY6 Rabbit Polyclonal Antibody

Catalog # AP93511

Product Information

Application	WB
Primary Accession	Q8NHM4
Reactivity	Rat, Human, Mouse
Host	Polyclonal, Rabbit, IgG
Clonality	Polyclonal
Calculated MW	26537

Additional Information

Other Names	Putative trypsin-6, 3.4.21.4, Serine protease 3 pseudogene 2, Trypsinogen C, PRSS3P2, T6, TRY6
Dilution	WB~~1:1000
Storage Conditions	-20°C

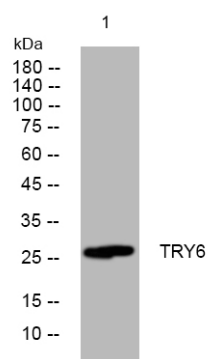
Protein Information

Name	PRSS3P2
Synonyms	T6, TRY6
Function	May regulate cell migration.
Cellular Location	Secreted.
Tissue Location	Overexpressed in metastasing in non small cell lung tumors, leading to an enhanced cell migration

Background

Although this locus appears to encode a protein similar to trypsinogen, the locus is thought to be a transcribed pseudogene. ESTs support its transcription, but expression of its predicted protein has not been observed. Its predicted protein sequence differs significantly from the known functional trypsinogens, including a different amino acid at the conserved residue 122 which is important for autolysis. This pseudogene and several other trypsinogen genes are localized to the T cell receptor beta locus on chromosome 7. [provided by RefSeq, Jul 2008],

Images



Western blot analysis of lysates from SW480 cells,
primary antibody was diluted at 1:1000, 4° over night

Please note: All products are 'FOR RESEARCH USE ONLY. NOT FOR USE IN DIAGNOSTIC OR THERAPEUTIC PROCEDURES'.