

CDY2 Rabbit Polyclonal Antibody

CDY2 Rabbit Polyclonal Antibody

Catalog # AP93508

Product Information

Application	WB
Primary Accession	Q9Y6F7
Reactivity	Rat, Human, Mouse
Host	Polyclonal, Rabbit, IgG
Clonality	Polyclonal
Calculated MW	60524

Additional Information

Gene ID	203611;9426
Other Names	Testis-specific chromodomain protein Y 2, 2.3.1.48, CDY2A, CDY2
Dilution	WB~~1:1000
Storage Conditions	-20°C

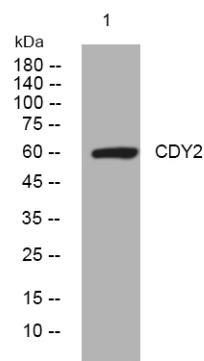
Protein Information

Name	CDY2A
Synonyms	CDY2
Function	May have histone acetyltransferase activity.
Cellular Location	Nucleus.
Tissue Location	Testis specific.

Background

This intronless gene encodes a protein containing a chromodomain and a histone acetyltransferase catalytic domain. Chromodomain proteins are components of heterochromatin-like complexes and can act as gene repressors. This protein is localized to the nucleus of late spermatids where histone hyperacetylation takes place. Histone hyperacetylation is thought to facilitate the transition in which protamines replace histones as the major DNA-packaging protein. Two nearly identical copies of this gene are found in a palindromic region on chromosome Y; this record represents the telomeric copy. Chromosome Y also contains a pair of closely related genes in another more telomeric palindrome as well as several related pseudogenes. [provided by RefSeq, Jul 2008],

Images



Western blot analysis of lysates from HpeG2 cells, primary antibody was diluted at 1:1000, 4°over night

Please note: All products are 'FOR RESEARCH USE ONLY. NOT FOR USE IN DIAGNOSTIC OR THERAPEUTIC PROCEDURES'.