

# PRPC Rabbit Polyclonal Antibody

PRPC Rabbit Polyclonal Antibody

Catalog # AP93506

## Product Information

---

<b>Application</b>	WB
<b>Primary Accession</b>	<a href="#">P02810</a>
<b>Reactivity</b>	Rat, Human, Mouse
<b>Host</b>	Polyclonal, Rabbit, IgG
<b>Clonality</b>	Polyclonal
<b>Calculated MW</b>	17015

## Additional Information

---

<b>Gene ID</b>	5554;5555
<b>Other Names</b>	Salivary acidic proline-rich phosphoprotein 1/2, Db-s, PRP-1/PRP-2, Parotid acidic protein, Pa, Parotid double-band protein, Parotid isoelectric focusing variant protein, PIF-S, Parotid proline-rich protein 1/2, Pr1/Pr2, Protein C, Salivary acidic proline-rich phosphoprotein 1/2, Salivary acidic proline-rich phosphoprotein 3/4, Db-F, PIF-F, PRP-3/PRP-4, Protein A, Peptide P-C, PRH1
<b>Dilution</b>	WB~~1:1000
<b>Storage Conditions</b>	-20°C

## Protein Information

---

<b>Name</b>	PRH1
<b>Function</b>	PRP's act as highly potent inhibitors of crystal growth of calcium phosphates. They provide a protective and reparative environment for dental enamel which is important for the integrity of the teeth.
<b>Cellular Location</b>	Secreted.

## Background

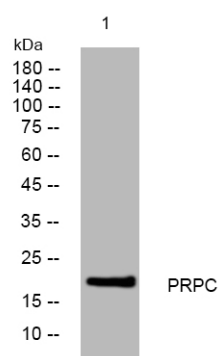
---

This gene encodes a member of the heterogeneous family of proline-rich salivary glycoproteins. The encoded preproprotein undergoes proteolytic processing to generate one or more mature isoforms before secretion from the parotid and submandibular/sublingual glands. Multiple distinct alleles of this locus including the parotid isoelectric-focusing variant slow (PIF-s), the parotid acidic protein (Pa), and the double band slow (Db-s) isoforms have been characterized. The reference genome encodes the Db-s allele. Certain alleles of this gene are associated with susceptibility to dental caries. This gene is located in a cluster of closely related salivary proline-rich proteins on chromosome 12. Co-transcription of this gene with adjacent

genes has been observed. Alternate splicing of this gene results in multiple transcript variants encoding different isoforms. [provided by RefSeq, Oct 2015],

## Images

---



Western blot analysis of lysates from 293T cells, primary antibody was diluted at 1:1000, 4°over night

Please note: All products are 'FOR RESEARCH USE ONLY. NOT FOR USE IN DIAGNOSTIC OR THERAPEUTIC PROCEDURES'.