

SNTAN Rabbit Polyclonal Antibody

SNTAN Rabbit Polyclonal Antibody

Catalog # AP93502

Product Information

Application	WB
Primary Accession	A6NMZ2
Reactivity	Human, Mouse
Host	Polyclonal, Rabbit,IgG
Clonality	Polyclonal
Calculated MW	16468

Additional Information

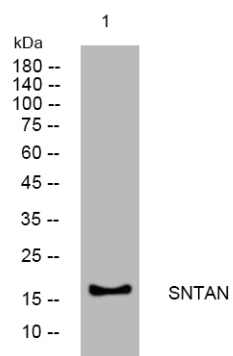
Gene ID	132203
Other Names	Sentan, Protein S100-A1-like, S100 calcium-binding protein A1-like, SNTN, S100A1L
Dilution	WB~~1:1000
Storage Conditions	-20°C

Protein Information

Name	SNTN
Synonyms	S100A1L
Function	May be a component of the linker structure that bridges the ciliary membrane and peripheral singlet microtubules.
Cellular Location	Cell projection, cilium. Note=Expressed exclusively at the cilium tip where it localizes between the cell membrane and peripheral A-subfibers.

Images

Western blot analysis of lysates from HuvEc cells, primary antibody was diluted at 1:1000, 4°over night



Please note: All products are 'FOR RESEARCH USE ONLY. NOT FOR USE IN DIAGNOSTIC OR THERAPEUTIC PROCEDURES'.