

# S35G1 Rabbit Polyclonal Antibody

S35G1 Rabbit Polyclonal Antibody

Catalog # AP93495

## Product Information

---

Application	WB
Primary Accession	<a href="#">Q2M3R5</a>
Reactivity	Human, Mouse
Host	Polyclonal, Rabbit, IgG
Clonality	Polyclonal
Calculated MW	39836

## Additional Information

---

Gene ID	159371
Other Names	Solute carrier family 35 member G1, Partner of STIM1, Transmembrane protein 20, SLC35G1, C10orf60, POST, TMEM20
Dilution	WB~~1:1000
Storage Conditions	-20°C

## Protein Information

---

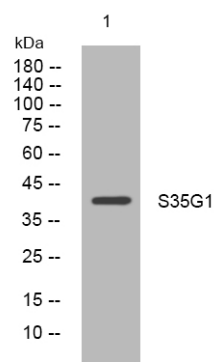
Name	SLC35G1
Synonyms	C10orf60, POST, TMEM20
Function	May play a role in intracellular calcium sensing and homeostasis. May act as a negative regulator of plasma membrane calcium-transporting ATPases preventing calcium efflux from the cell.
Cellular Location	Cell membrane; Multi-pass membrane protein. Endoplasmic reticulum membrane; Multi-pass membrane protein. Note=Translocates from the endoplasmic reticulum to the cell membrane in response to a depletion of intracellular calcium and is detected at punctae corresponding to junctions between the endoplasmic reticulum and the cell membrane
Tissue Location	Ubiquitously expressed.

## Background

---

This gene encodes a transmembrane protein which is a member of the drug/metabolite transporter protein superfamily. The encoded protein may play a role in the regulation of calcium levels inside the cell.

Images



Western blot analysis of lysates from HeLa cells, primary antibody was diluted at 1:1000, 4°over night

Please note: All products are 'FOR RESEARCH USE ONLY. NOT FOR USE IN DIAGNOSTIC OR THERAPEUTIC PROCEDURES'.