

# OCR1 Rabbit Polyclonal Antibody

OCR1 Rabbit Polyclonal Antibody

Catalog # AP93494

## Product Information

---

Application	IHC, IF
Primary Accession	<a href="#">Q9BZK8</a>
Reactivity	Rat, Human, Mouse
Host	Polyclonal, Rabbit, IgG
Clonality	Polyclonal
Calculated MW	8369

## Additional Information

---

Other Names	Ovarian cancer-related protein 1, OCR1
Dilution	IHC~~1:100~500 IF~~1:50~200
Storage Conditions	-20°C

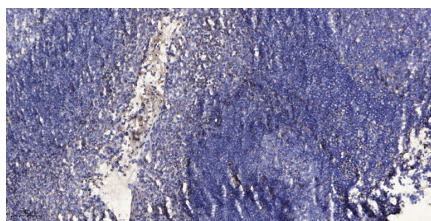
## Protein Information

---

Name	OCR1
------	------

## Images

---



Immunohistochemical analysis of paraffin-embedded human tonsil. 1, Antibody was diluted at 1:200(4° overnight). 2, Tris-EDTA, pH9.0 was used for antigen retrieval. 3, Secondary antibody was diluted at 1:200(room temperature, 30min).

Please note: All products are 'FOR RESEARCH USE ONLY. NOT FOR USE IN DIAGNOSTIC OR THERAPEUTIC PROCEDURES'.