

# KRA59 Rabbit Polyclonal Antibody

KRA59 Rabbit Polyclonal Antibody

Catalog # AP93490

## Product Information

---

<b>Application</b>	WB
<b>Primary Accession</b>	<a href="#">P26371</a>
<b>Reactivity</b>	Rat, Human, Mouse
<b>Host</b>	Polyclonal, Rabbit, IgG
<b>Clonality</b>	Polyclonal
<b>Calculated MW</b>	16276

## Additional Information

---

<b>Gene ID</b>	3846
<b>Other Names</b>	Keratin-associated protein 5-9, Keratin, cuticle, ultrahigh sulfur 1, Keratin, ultra high-sulfur matrix protein A, Keratin-associated protein 5.9, UHS keratin A, UHS KerA, Ultrahigh sulfur keratin-associated protein 5.9, KRTAP5-9, KAP5.9, KRN1, KRTAP5.9, UHSK1
<b>Dilution</b>	WB~~1:1000
<b>Storage Conditions</b>	-20°C

## Protein Information

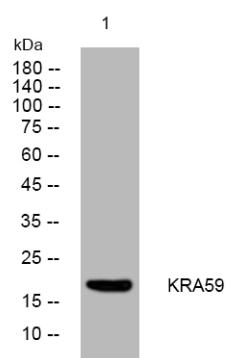
---

<b>Name</b>	KRTAP5-9
<b>Synonyms</b>	KAP5.9, KRN1, KRTAP5.9, UHSK1
<b>Function</b>	In the hair cortex, hair keratin intermediate filaments are embedded in an interfilamentous matrix, consisting of hair keratin-associated protein (KRTAP), which are essential for the formation of a rigid and resistant hair shaft through their extensive disulfide bond cross-linking with abundant cysteine residues of hair keratins. The matrix proteins include the high-sulfur and high-glycine-tyrosine keratins.
<b>Tissue Location</b>	Restricted to hair root, not detected in any other tissues. Expressed in cuticle layers of differentiating hair follicles

## Images

---

Western blot analysis of lysates from MCF-7 cells, primary



antibody was diluted at 1:1000, 4°over night

Please note: All products are 'FOR RESEARCH USE ONLY. NOT FOR USE IN DIAGNOSTIC OR THERAPEUTIC PROCEDURES'.