

CK085 Rabbit Polyclonal Antibody

CK085 Rabbit Polyclonal Antibody

Catalog # AP93489

Product Information

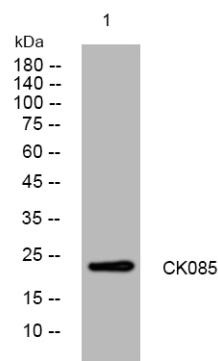
Application	WB
Primary Accession	Q3KP22
Reactivity	Rat, Human, Mouse
Host	Polyclonal, Rabbit, IgG
Clonality	Polyclonal
Calculated MW	20078

Additional Information

Gene ID	283129
Other Names	Membrane-anchored junction protein, MAJIN (HGNC:27441)
Dilution	WB~~1:1000
Storage Conditions	-20°C

Protein Information

Name	MAJIN (HGNC:27441)
Function	Meiosis-specific telomere-associated protein involved in meiotic telomere attachment to the nucleus inner membrane, a crucial step for homologous pairing and synapsis. Component of the MAJIN-TERB1- TERB2 complex, which promotes telomere cap exchange by mediating attachment of telomeric DNA to the inner nuclear membrane and replacement of the protective cap of telomeric chromosomes: in early meiosis, the MAJIN-TERB1-TERB2 complex associates with telomeric DNA and the shelterin/telosome complex. During prophase, the complex matures and promotes release of the shelterin/telosome complex from telomeric DNA. In the complex, MAJIN acts as the anchoring subunit to the nucleus inner membrane. MAJIN shows DNA-binding activity, possibly for the stabilization of telomere attachment on the nucleus inner membrane.
Cellular Location	Nucleus inner membrane {ECO:0000250 UniProtKB:Q9D992}; Single-pass membrane protein {ECO:0000250 UniProtKB:Q9D992}. Chromosome, telomere {ECO:0000250 UniProtKB:Q9D992}. Note=In leptotene spermatocytes, localizes to telomeres that localize to the nucleus inner membrane {ECO:0000250 UniProtKB:Q9D992}



Western blot analysis of lysates from A431 cells, primary antibody was diluted at 1:1000, 4°over night

Please note: All products are 'FOR RESEARCH USE ONLY. NOT FOR USE IN DIAGNOSTIC OR THERAPEUTIC PROCEDURES'.