

# CD048 Rabbit Polyclonal Antibody

CD048 Rabbit Polyclonal Antibody

Catalog # AP93486

## Product Information

---

Application	IHC, IF
Primary Accession	<a href="#">Q5BLP8</a>
Reactivity	Human, Mouse
Host	Polyclonal, Rabbit, IgG
Clonality	Polyclonal
Calculated MW	10170

## Additional Information

---

Gene ID	401115
Other Names	NELL2-interacting cell ontogeny regulator 1 {ECO:0000312 HGNC:HGNC:34437}, NELL2-interacting cofactor for lumicrine signaling, NICOL1 ( <a href="#">HGNC:34437</a> )
Dilution	IHC~~1:100~500 IF~~1:50~200
Storage Conditions	-20°C

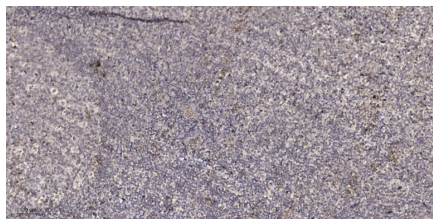
## Protein Information

---

Name	NICOL1 ( <a href="#">HGNC:34437</a> )
Function	mRNA-binding protein which interacts with a range of target mRNAs including SERPINE1, ACTA2, CCN2 and COL4A1 and may promote extracellular matrix production. Binds to the 3'-UTR of SERPINE1 mRNA and stabilizes the mRNA, possibly by competing for binding with SERBP1 and preventing SERBP1-mediated mRNA degradation. Also binds to the 3'- UTR of ACTA2. Testis-derived lumicrine factor that triggers epididymal differentiation and sperm maturation.
Cellular Location	Secreted {ECO:0000250 UniProtKB:Q3UR78}. Cytoplasm, perinuclear region {ECO:0000250 UniProtKB:Q3UR78} Note=Detected in the perinuclear region of fibroblasts {ECO:0000250 UniProtKB:Q3UR78}
Tissue Location	Detected in the brain (at protein level) (PubMed:21287218). Also expressed at low levels in the kidney, primarily in tubular epithelial cells (PubMed:38625739)

## Images

---



Immunohistochemical analysis of paraffin-embedded human tonsil. 1, Antibody was diluted at 1:200(4° overnight). 2, Tris-EDTA,pH9.0 was used for antigen retrieval. 3,Secondary antibody was diluted at 1:200(room temperature, 30min).

Please note: All products are 'FOR RESEARCH USE ONLY. NOT FOR USE IN DIAGNOSTIC OR THERAPEUTIC PROCEDURES'.