

# STB5L Rabbit Polyclonal Antibody

STB5L Rabbit Polyclonal Antibody

Catalog # AP93479

## Product Information

---

Application	WB
Primary Accession	<a href="#">Q9Y2K9</a>
Reactivity	Human, Mouse
Host	Polyclonal, Rabbit,IgG
Clonality	Polyclonal
Calculated MW	131887

## Additional Information

---

Gene ID	9515
Other Names	Syntaxin-binding protein 5-like, Lethal(2) giant larvae protein homolog 4, Tomosyn-2, STXBP5L, KIAA1006, LLGL4
Dilution	WB~~1:1000
Storage Conditions	-20°C

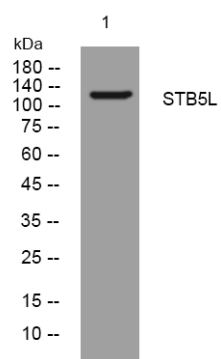
## Protein Information

---

Name	STXBP5L
Synonyms	KIAA1006, LLGL4
Function	Plays a role in vesicle trafficking and exocytosis inhibition. In pancreatic beta-cells, inhibits insulin secretion probably by interacting with and regulating STX1A and STX4, key t-SNARE proteins involved in the fusion of insulin granules to the plasma membrane. Also plays a role in neurotransmitter release by inhibiting basal acetylcholine release from axon terminals and by preventing synaptic fatigue upon repetitive stimulation (By similarity). Promotes as well axonal outgrowth (PubMed: <a href="#">25504045</a> ).
Cellular Location	Cytoplasm. Cell membrane; Peripheral membrane protein. Membrane; Peripheral membrane protein Note=Cytoplasmic, and associated with vesicular membranes and the plasma membrane.
Tissue Location	Detected in kidney, hippocampus and lung carcinoma.

## Images

---



Western blot analysis of lysates from CACO2 cells,  
primary antibody was diluted at 1:1000, 4° over night

Please note: All products are 'FOR RESEARCH USE ONLY. NOT FOR USE IN DIAGNOSTIC OR THERAPEUTIC PROCEDURES'.