

KRA46 Rabbit Polyclonal Antibody

KRA46 Rabbit Polyclonal Antibody

Catalog # AP93477

Product Information

Application	WB
Primary Accession	Q9BYQ5
Reactivity	Rat, Human, Mouse
Host	Polyclonal, Rabbit, IgG
Clonality	Polyclonal
Calculated MW	21825

Additional Information

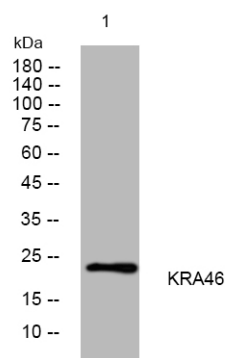
Gene ID	81871
Other Names	Keratin-associated protein 4-6, Keratin-associated protein 4-15, Keratin-associated protein 4.15, Keratin-associated protein 4.6, Ultrahigh sulfur keratin-associated protein 4.15, KRTAP4-6, KAP4.15, KRTAP4-15, KRTAP4.15, KRTAP4.6
Dilution	WB~~1:1000
Storage Conditions	-20°C

Protein Information

Name	KRTAP4-6
Synonyms	KAP4.15, KRTAP4-15, KRTAP4.15, KRTAP4.6
Function	In the hair cortex, hair keratin intermediate filaments are embedded in an interfilamentous matrix, consisting of hair keratin-associated proteins (KRTAP), which are essential for the formation of a rigid and resistant hair shaft through their extensive disulfide bond cross-linking with abundant cysteine residues of hair keratins. The matrix proteins include the high-sulfur and high-glycine-tyrosine keratins.
Tissue Location	Expressed in the hair follicles.

Images

Western blot analysis of lysates from VEC cells, primary antibody was diluted at 1:1000, 4°over night



Please note: All products are 'FOR RESEARCH USE ONLY. NOT FOR USE IN DIAGNOSTIC OR THERAPEUTIC PROCEDURES'.