

RGL3 Rabbit Polyclonal Antibody

RGL3 Rabbit Polyclonal Antibody

Catalog # AP93475

Product Information

Application	WB
Primary Accession	Q3MIN7
Reactivity	Human, Mouse
Host	Polyclonal, Rabbit,IgG
Clonality	Polyclonal
Calculated MW	78119

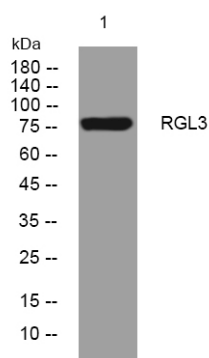
Additional Information

Gene ID	57139
Other Names	Ral guanine nucleotide dissociation stimulator-like 3, RalGDS-like 3, RGL3
Dilution	WB~~1:1000
Storage Conditions	-20°C

Protein Information

Name	RGL3
Function	Guanine nucleotide exchange factor (GEF) for Ral-A. Potential effector of GTPase HRas and Ras-related protein M-Ras. Negatively regulates Elk-1-dependent gene induction downstream of HRas and MEKK1 (By similarity).

Images



Western blot analysis of lysates from HeLa cells, primary antibody was diluted at 1:1000, 4° over night

Please note: All products are 'FOR RESEARCH USE ONLY. NOT FOR USE IN DIAGNOSTIC OR THERAPEUTIC PROCEDURES'.