

EYS Rabbit Polyclonal Antibody

EYS Rabbit Polyclonal Antibody

Catalog # AP93472

Product Information

Application	IHC, IF
Primary Accession	Q5T1H1
Reactivity	Rat, Human, Mouse
Host	Polyclonal, Rabbit, IgG
Clonality	Polyclonal
Calculated MW	350796

Additional Information

Gene ID	346007
Other Names	Protein eyes shut homolog, Epidermal growth factor-like protein 10, EGF-like protein 10, Epidermal growth factor-like protein 11, EGF-like protein 11, Protein spacemaker homolog, EYS, C6orf178, C6orf179, C6orf180, EGFL10, EGFL11, SPAM
Dilution	IHC~~1:100~500 IF~~1:50~200
Storage Conditions	-20°C

Protein Information

Name	EYS
Synonyms	C6orf178, C6orf179, C6orf180, EGFL10, EG
Function	Required to maintain the integrity of photoreceptor cells (PubMed: 18836446). Specifically required for normal morphology of the photoreceptor ciliary pocket, and might thus facilitate protein trafficking between the photoreceptor inner and outer segments via the transition zone (By similarity).
Cellular Location	Cell projection, cilium, photoreceptor outer segment. Cell projection, cilium. Cytoplasm, cytoskeleton, cilium axoneme. Cytoplasm, cytoskeleton, microtubule organizing center, centrosome. Secreted, extracellular space, extracellular matrix, interphotoreceptor matrix. Note=Localizes to discrete puncta at, or adjacent to, the photoreceptor connecting cilium (PubMed:27737822) Highly expressed in cone photoreceptor outer segments (PubMed:27737822). Weakly expressed in rod photoreceptor outer segments (By similarity). May localize to the cilium axoneme (PubMed:27846257) May also be secreted into the interphotoreceptor extracellular matrix (PubMed:27737822). {ECO:0000250 UniProtKB:A0A2K5V015,

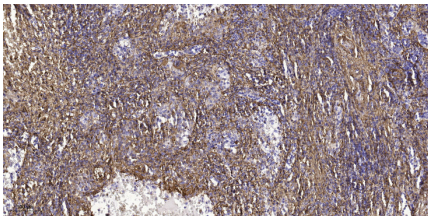
Tissue Location

Expressed in retina (at protein level) (PubMed:18836446, PubMed:18976725, PubMed:27737822, PubMed:27846257) Isoform 1: Detected in retina (PubMed:27846257). Isoform 2: Detected in retina (PubMed:27846257). Isoform 3: Strongly expressed in retina and testis (PubMed:27846257). Isoform 4: Strongly expressed in testis, and weakly expressed in retina (PubMed:27846257)

Background

The product of this gene contains multiple epidermal growth factor (EGF)-like and LamG domains. The protein is expressed in the photoreceptor layer of the retina, and the gene is mutated in autosomal recessive retinitis pigmentosa. Multiple transcript variants encoding different isoforms have been found for this gene. [provided by RefSeq, Dec 2008],

Images



Immunohistochemical analysis of paraffin-embedded human spleen tissue. 1,primary Antibody was diluted at 1:200(4° overnight). 2, Sodium citrate pH 6.0 was used for antigen retrieval(>98°C,20min). 3,Secondary antibody was diluted at 1:200

Please note: All products are 'FOR RESEARCH USE ONLY. NOT FOR USE IN DIAGNOSTIC OR THERAPEUTIC PROCEDURES'.