

# DUPD1 Rabbit Polyclonal Antibody

DUPD1 Rabbit Polyclonal Antibody

Catalog # AP93471

## Product Information

Application	WB
Primary Accession	<a href="#">Q68J44</a>
Reactivity	Rat, Human, Mouse
Host	Polyclonal, Rabbit,IgG
Clonality	Polyclonal
Calculated MW	25336

## Additional Information

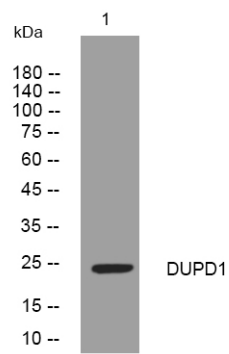
Gene ID	338599
Other Names	Dual specificity phosphatase 29 {ECO:0000312 HGNC:HGNC:23481}, Dual specificity phosphatase 27, Dual specificity phosphatase DUPD1, 3.1.3.16, 3.1.3.48, DUSP29 ( <a href="#">HGNC:23481</a> )
Dilution	WB~~1:1000
Storage Conditions	-20°C

## Protein Information

Name	DUSP29 ( <a href="#">HGNC:23481</a> )
Function	Dual specificity phosphatase able to dephosphorylate phosphotyrosine, phosphoserine and phosphothreonine residues within the same substrate, with a preference for phosphotyrosine as a substrate (PubMed: <a href="#">17498703</a> ). Involved in the modulation of intracellular signaling cascades. In skeletal muscle regulates systemic glucose homeostasis by activating, AMPK, an energy sensor protein kinase (By similarity). Affects MAP kinase signaling though modulation of the MAPK1/2 cascade in skeletal muscle promoting muscle cell differentiation, development and atrophy (By similarity).
Cellular Location	Cytoplasm. Nucleus {ECO:0000250 UniProtKB:Q8BK84}

## Images

Western blot analysis of lysates from VEC cells, primary antibody was diluted at 1:1000, 4°over night



Please note: All products are 'FOR RESEARCH USE ONLY. NOT FOR USE IN DIAGNOSTIC OR THERAPEUTIC PROCEDURES'.