

# RL37L Rabbit Polyclonal Antibody

RL37L Rabbit Polyclonal Antibody

Catalog # AP93466

## Product Information

<b>Application</b>	IHC, IF
<b>Primary Accession</b>	<a href="#">A6NKH3</a>
<b>Reactivity</b>	Rat, Human, Mouse
<b>Host</b>	Polyclonal, Rabbit,IgG
<b>Clonality</b>	Polyclonal
<b>Calculated MW</b>	10583

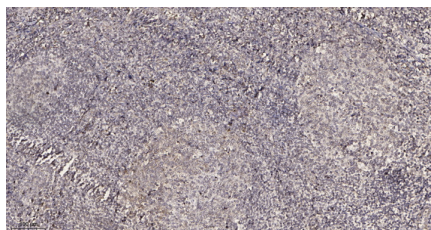
## Additional Information

<b>Other Names</b>	Putative ribosomal protein eL43-like, Putative 60S ribosomal protein L37a-like protein, Ribosomal protein L37a pseudogene 8, RPL37AP8, RPL37L
<b>Dilution</b>	IHC~~1:100~500 IF~~1:50~200
<b>Storage Conditions</b>	-20°C

## Protein Information

<b>Name</b>	RPL37AP8
<b>Synonyms</b>	RPL37L

## Images



Immunohistochemical analysis of paraffin-embedded human tonsil. 1, Antibody was diluted at 1:200(4° overnight). 2, Tris-EDTA,pH9.0 was used for antigen retrieval. 3,Secondary antibody was diluted at 1:200(room temperature, 30min).

Please note: All products are 'FOR RESEARCH USE ONLY. NOT FOR USE IN DIAGNOSTIC OR THERAPEUTIC PROCEDURES'.