

CT452 Rabbit Polyclonal Antibody

CT452 Rabbit Polyclonal Antibody

Catalog # AP93465

Product Information

Application	WB
Primary Accession	Q5DJT8
Reactivity	Rat, Human, Mouse
Host	Polyclonal, Rabbit, IgG
Clonality	Polyclonal
Calculated MW	21363

Additional Information

Gene ID	102723680;102723737;728911
Other Names	Cancer/testis antigen family 45 member A2 {ECO:0000312 HGNC:HGNC:28400}, Cancer/testis antigen 45-2, Cancer/testis antigen 45A2, CT45A2 (HGNC:28400)
Dilution	WB~~1:1000
Storage Conditions	-20°C

Protein Information

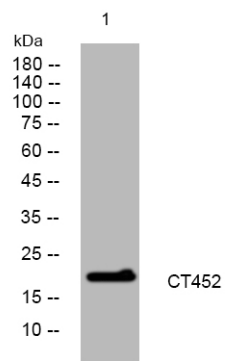
Name	CT45A2 (HGNC:28400)
Tissue Location	Testis specific. Expressed in cancer cell lines.

Background

This gene represents one of a cluster of several similar genes located on the q arm of chromosome X. The genes in this cluster encode members of the cancer/testis (CT) family of antigens, and are distinct from other CT antigens. These antigens are thought to be novel therapeutic targets for human cancers. [provided by RefSeq, Apr 2014],

Images

Western blot analysis of lysates from THP-1 cells, primary antibody was diluted at 1:1000, 4°over night



Please note: All products are 'FOR RESEARCH USE ONLY. NOT FOR USE IN DIAGNOSTIC OR THERAPEUTIC PROCEDURES'.