

DCA15 Rabbit Polyclonal Antibody

DCA15 Rabbit Polyclonal Antibody

Catalog # AP93462

Product Information

| | |
|-------------------|-------------------------|
| Application | WB |
| Primary Accession | Q66K64 |
| Reactivity | Human, Mouse |
| Host | Polyclonal, Rabbit, IgG |
| Clonality | Polyclonal |
| Calculated MW | 66463 |

Additional Information

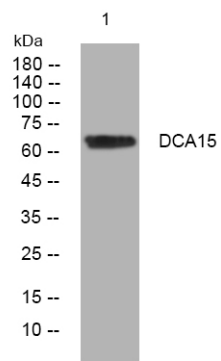
| | |
|--------------------|---|
| Gene ID | 90379 |
| Other Names | DDB1- and CUL4-associated factor 15, DCAF15 {ECO:0000303 PubMed:28437394, ECO:0000312 HGNC:HGNC:25095} |
| Dilution | WB~~1:1000 |
| Storage Conditions | -20°C |

Protein Information

| | |
|----------|---|
| Name | DCAF15 {ECO:0000303 PubMed:28437394, ECO:0000312 HGNC:HGNC:25095} |
| Function | Substrate-recognition component of the DCX(DCAF15) complex, a cullin-4-RING E3 ubiquitin-protein ligase complex that mediates ubiquitination and degradation of target proteins (PubMed: 16949367 , PubMed: 31452512). The DCX(DCAF15) complex acts as a regulator of the natural killer (NK) cells effector functions, possibly by mediating ubiquitination and degradation of cohesin subunits SMC1A and SMC3 (PubMed: 31452512). May play a role in the activation of antigen- presenting cells (APC) and their interaction with NK cells (PubMed: 31452512). |

Images

Western blot analysis of lysates from HEK293 cells, primary antibody was diluted at 1:1000, 4° over night



Please note: All products are 'FOR RESEARCH USE ONLY. NOT FOR USE IN DIAGNOSTIC OR THERAPEUTIC PROCEDURES'.