

KBTB4 Rabbit Polyclonal Antibody

KBTB4 Rabbit Polyclonal Antibody

Catalog # AP93461

Product Information

Application	WB
Primary Accession	Q9NVX7
Reactivity	Human, Mouse
Host	Polyclonal, Rabbit,IgG
Clonality	Polyclonal
Calculated MW	59904

Additional Information

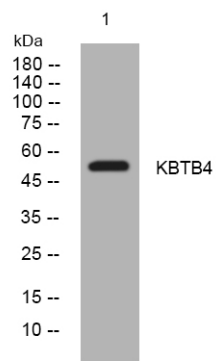
Gene ID	55709
Other Names	Kelch repeat and BTB domain-containing protein 4, BTB and kelch domain-containing protein 4, KBTBD4, BKLHD4
Dilution	WB~~1:1000
Storage Conditions	-20°C

Protein Information

Name	KBTBD4
Synonyms	BKLHD4
Function	Substrate-specific adapter of a BCR (BTB-CUL3-RBX1) E3 ubiquitin ligase complex which targets CoREST corepressor complex components RCOR1, KDM1A/LSD1 and HDAC2 for proteasomal degradation (PubMed: 33417871). RCOR1 is likely to be the primary target while degradation of KDM1A and HDAC2 is likely due to their association with RCOR1 (PubMed: 33417871). Also targets RCOR3, MIER2 and MIER3 for proteasomal degradation as well as associated proteins ZNF217 and RREB1 (PubMed: 36997086). Degradation is dependent on the presence of an ELM2 domain in the target proteins (PubMed: 36997086).

Images

Western blot analysis of lysates from 3T3 cells, primary antibody was diluted at 1:1000, 4°over night



Please note: All products are 'FOR RESEARCH USE ONLY. NOT FOR USE IN DIAGNOSTIC OR THERAPEUTIC PROCEDURES'.