

# PRAP1 Rabbit Polyclonal Antibody

PRAP1 Rabbit Polyclonal Antibody

Catalog # AP93455

## Product Information

---

Application	WB
Primary Accession	<a href="#">Q96NZ9</a>
Reactivity	Rat, Human, Mouse
Host	Polyclonal, Rabbit, IgG
Clonality	Polyclonal
Calculated MW	17208

## Additional Information

---

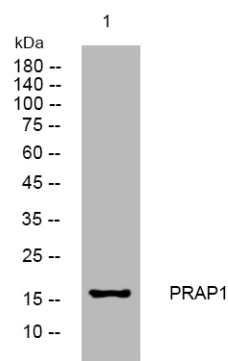
Gene ID	118471
Other Names	Proline-rich acidic protein 1, Epididymis tissue protein Li 178, Uterine-specific proline-rich acidic protein, PRAP1, UPA
Dilution	WB~~1:1000
Storage Conditions	-20°C

## Protein Information

---

Name	PRAP1
Synonyms	UPA
Function	Lipid-binding protein which promotes lipid absorption by facilitating MTTP-mediated lipid transfer (mainly triglycerides and phospholipids) and MTTP-mediated apoB lipoprotein assembly and secretion (By similarity). Protects the gastrointestinal epithelium from irradiation-induced apoptosis (By similarity). May play an important role in maintaining normal growth homeostasis in epithelial cells (PubMed: <a href="#">14583459</a> ). Involved in p53/TP53-dependent cell survival after DNA damage (PubMed: <a href="#">23235459</a> ). May down-regulate the expression of MAD1L1 and exert a suppressive role in mitotic spindle assembly checkpoint in hepatocellular carcinomas (PubMed: <a href="#">24374861</a> ).
Cellular Location	Secreted. Endoplasmic reticulum {ECO:0000250 UniProtKB:Q80XD8}
Tissue Location	Highly expressed in the intestinal epithelial cells (at protein level) (PubMed:32629119). Abundantly expressed in the epithelial cells of the liver, kidney and cervix. Significantly down-regulated in hepatocellular carcinoma and right colon adenocarcinoma compared with the respective adjacent normal tissues. Expressed in epididymis (at protein level).

# Images



Western blot analysis of lysates from HpeG2 cells, primary antibody was diluted at 1:1000, 4°over night

Please note: All products are 'FOR RESEARCH USE ONLY. NOT FOR USE IN DIAGNOSTIC OR THERAPEUTIC PROCEDURES'.