

# RBV1C Rabbit Polyclonal Antibody

RBV1C Rabbit Polyclonal Antibody

Catalog # AP93448

## Product Information

---

Application	WB
Primary Accession	<a href="#">P0DJ04</a>
Reactivity	Rat, Human, Mouse
Host	Polyclonal, Rabbit, IgG
Clonality	Polyclonal
Calculated MW	55784

## Additional Information

---

Other Names	RNA-binding motif protein, Y chromosome, family 1 member C, RBMY1C
Dilution	WB~~1:1000
Storage Conditions	-20°C

## Protein Information

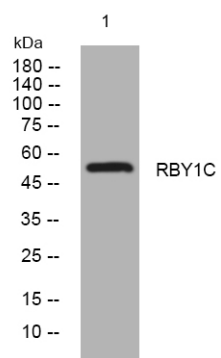
---

Name	RBMY1C
Function	RNA-binding protein involved in pre-mRNA splicing. Required for sperm development. Acts additively with TRA2B to promote exon 7 inclusion of the survival motor neuron SMN. Binds non-specifically to mRNAs.
Cellular Location	Nucleus.
Tissue Location	Testis-specific.

## Images

---

Western blot analysis of lysates from VEC cells, primary antibody was diluted at 1:1000, 4°over night



Please note: All products are 'FOR RESEARCH USE ONLY. NOT FOR USE IN DIAGNOSTIC OR THERAPEUTIC PROCEDURES'.