

KI3X1 Rabbit Polyclonal Antibody

KI3X1 Rabbit Polyclonal Antibody

Catalog # AP93438

Product Information

Application	WB
Primary Accession	Q9H7L2
Reactivity	Rat, Human, Mouse
Host	Polyclonal, Rabbit,IgG
Clonality	Polyclonal
Calculated MW	38777

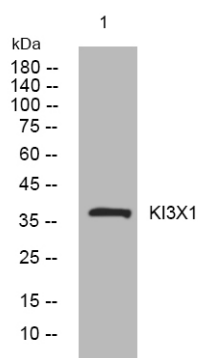
Additional Information

Other Names	Putative killer cell immunoglobulin-like receptor-like protein KIR3DX1, Leukocyte receptor cluster member 12, KIR3DX1, KIR3DL0, LENG12
Dilution	WB~~1:1000
Storage Conditions	-20°C

Protein Information

Name	KIR3DX1
Synonyms	KIR3DL0, LENG12
Cellular Location	Secreted.
Tissue Location	Expressed in NK-cells.

Images



Western blot analysis of lysates from SH-SY5Y cells, primary antibody was diluted at 1:1000, 4° over night

Please note: All products are 'FOR RESEARCH USE ONLY. NOT FOR USE IN DIAGNOSTIC OR THERAPEUTIC PROCEDURES'.