

DCD2C Rabbit Polyclonal Antibody

DCD2C Rabbit Polyclonal Antibody

Catalog # AP93433

Product Information

| | |
|-------------------|-------------------------|
| Application | WB |
| Primary Accession | A8MYV0 |
| Reactivity | Human, Mouse |
| Host | Polyclonal, Rabbit, IgG |
| Clonality | Polyclonal |
| Calculated MW | 41608 |

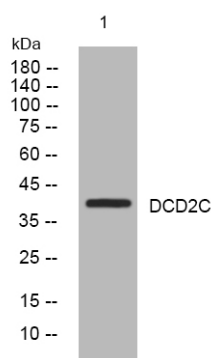
Additional Information

| | |
|--------------------|--|
| Gene ID | 728597 |
| Other Names | Doublecortin domain-containing protein 2C, DCDC2C (HGNC:32696) |
| Dilution | WB~~1:1000 |
| Storage Conditions | -20°C |

Protein Information

| | |
|-------------------|---|
| Name | DCDC2C (HGNC:32696) |
| Cellular Location | Cell projection, cilium, flagellum. Cytoplasm Note=Detected along the length of the sperm flagellum and in the cytoplasm of the germ cells. |
| Tissue Location | Expressed in testis and spermatozoa (at protein level). |

Images



Western blot analysis of lysates from PC-12 cells, primary antibody was diluted at 1:1000, 4° over night

Please note: All products are 'FOR RESEARCH USE ONLY. NOT FOR USE IN DIAGNOSTIC OR THERAPEUTIC PROCEDURES'.