

MER34 Rabbit Polyclonal Antibody

MER34 Rabbit Polyclonal Antibody

Catalog # AP93428

Product Information

Application	WB
Primary Accession	Q9H9K5
Reactivity	Rat, Human, Mouse
Host	Polyclonal, Rabbit, IgG
Clonality	Polyclonal
Calculated MW	63547

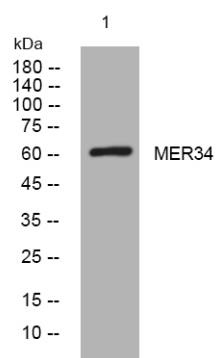
Additional Information

Gene ID	100288413
Other Names	Endogenous retroviral envelope protein HEMO, Endogenous retrovirus group MER34 member 1 Env polyprotein, HERV-MER_4q12 provirus ancestral Env polyprotein, Human endogenous MER34 (medium-reiteration-frequency-family-34) open reading frame, Human endogenous MER34 ORF, HEMO, Endogenous retroviral envelope protein HEMO, secreted form, Endogenous retroviral envelope protein HEMO, 48 kDa form, ERVMER34-1 (HGNC:42970)
Dilution	WB~~1:1000
Storage Conditions	-20°C

Protein Information

Name	ERVMER34-1 (HGNC:42970)
Function	Endogenous envelope proteins originate from retroviral envelope proteins, which mediate receptor recognition and membrane fusion during early infection. Endogenous envelope proteins may have kept, lost or modified their original function during evolution.
Cellular Location	[Endogenous retroviral envelope protein HEMO]: Cell membrane; Single-pass type I membrane protein. Note=This uncleaved form present at the cell surface represents the major form (PubMed:28739914)
Tissue Location	Expressed at high level in the placenta and stem cells (at protein level) (PubMed:28739914). Also expressed in the kidney but at a lower level (PubMed:28739914). Endogenous retroviral envelope protein HEMO, secreted form: Present in the blood of pregnant women (at protein level) (PubMed:28739914)

Images



Western blot analysis of lysates from HeLa cells, primary antibody was diluted at 1:1000, 4° over night

Please note: All products are 'FOR RESEARCH USE ONLY. NOT FOR USE IN DIAGNOSTIC OR THERAPEUTIC PROCEDURES'.