

CA101 Rabbit Polyclonal Antibody

CA101 Rabbit Polyclonal Antibody

Catalog # AP93418

Product Information

Application	WB
Primary Accession	Q5SY80
Reactivity	Rat, Human, Mouse
Host	Polyclonal, Rabbit, IgG
Clonality	Polyclonal
Calculated MW	109662

Additional Information

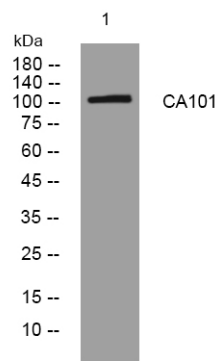
Gene ID	257044
Other Names	Cation channel sperm-associated auxiliary subunit epsilon {ECO:0000312 HGNC:HGNC:28491}, CatSper-epsilon, CATSPERE (HGNC:28491)
Dilution	WB~~1:1000
Storage Conditions	-20°C

Protein Information

Name	CATSPERE (HGNC:28491)
Function	Auxiliary component of the CatSper complex, a complex involved in sperm cell hyperactivation. Sperm cell hyperactivation is needed for sperm motility which is essential late in the preparation of sperm for fertilization.
Cellular Location	Cell projection, cilium, flagellum membrane; Single-pass type I membrane protein. Note=Specifically located in the principal piece of sperm tail.

Images

Western blot analysis of lysates from MCF-7 cells, primary antibody was diluted at 1:1000, 4° over night



Please note: All products are 'FOR RESEARCH USE ONLY. NOT FOR USE IN DIAGNOSTIC OR THERAPEUTIC PROCEDURES'.