

WDR36 Rabbit Polyclonal Antibody

WDR36 Rabbit Polyclonal Antibody

Catalog # AP93417

Product Information

Application	WB
Primary Accession	Q8NI36
Reactivity	Rat, Human, Mouse
Host	Polyclonal, Rabbit, IgG
Clonality	Polyclonal
Calculated MW	99366

Additional Information

Gene ID	134430
Other Names	WD repeat-containing protein 36, T-cell activation WD repeat-containing protein, TA-WDRP, WDR36 (HGNC:30696)
Dilution	WB~~1:1000
Storage Conditions	-20°C

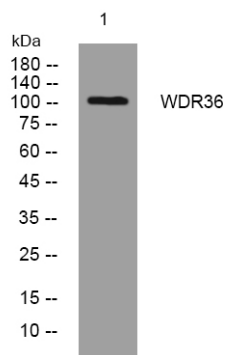
Protein Information

Name	WDR36 (HGNC:30696)
Function	Part of the small subunit (SSU) processome, first precursor of the small eukaryotic ribosomal subunit. During the assembly of the SSU processome in the nucleolus, many ribosome biogenesis factors, an RNA chaperone and ribosomal proteins associate with the nascent pre- rRNA and work in concert to generate RNA folding, modifications, rearrangements and cleavage as well as targeted degradation of pre- ribosomal RNA by the RNA exosome. Involved in the nucleolar processing of SSU 18S rRNA (PubMed: 21051332 , PubMed: 34516797). Involved in T-cell activation and highly coregulated with IL2 (PubMed: 15177553).
Cellular Location	Nucleus, nucleolus
Tissue Location	Expressed in heart, placenta, liver, skeletal muscle, kidney and pancreas. In ocular tissues, strong expression in iris, sclera, ciliary muscle, ciliary body, retina and optic nerve

Background

This gene encodes a member of the WD repeat protein family. WD repeats are minimally conserved regions of approximately 40 amino acids typically bracketed by gly-his and trp-asg (GH-WD), which may facilitate formation of heterotrimeric or multiprotein complexes. Members of this family are involved in a variety of cellular processes, including cell cycle progression, signal transduction, apoptosis, and gene regulation. Mutations in this gene have been associated with adult-onset primary open-angle glaucoma (POAG). [provided by RefSeq, Jul 2008],

Images



Western blot analysis of lysates from DU145 cells,
primary antibody was diluted at 1:1000, 4° over night

Please note: All products are 'FOR RESEARCH USE ONLY. NOT FOR USE IN DIAGNOSTIC OR THERAPEUTIC PROCEDURES'.