

RBM19 Rabbit Polyclonal Antibody

RBM19 Rabbit Polyclonal Antibody

Catalog # AP93410

Product Information

Application	WB
Primary Accession	Q9Y4C8
Reactivity	Human, Mouse
Host	Polyclonal, Rabbit, IgG
Clonality	Polyclonal
Calculated MW	107332

Additional Information

Gene ID	9904
Other Names	Probable RNA-binding protein 19, RNA-binding motif protein 19, RBM19, KIAA0682
Dilution	WB~~1:1000
Storage Conditions	-20°C

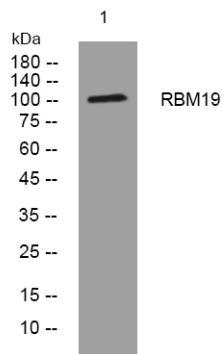
Protein Information

Name	RBM19
Synonyms	KIAA0682
Function	Plays a role in embryo pre-implantation development.
Cellular Location	Nucleus, nucleolus. Nucleus, nucleoplasm Cytoplasm. Chromosome. Note=In discrete foci distributed throughout the cytoplasm and nucleoplasm during the 4 to 8 cell stages and the morula stage, but not in the periphery of the nucleolar precursor body (NPB). During blastocyst development, becomes increasingly localized to the nucleolus and less to the cytoplasm. At the late blastocyst stage, localized predominantly in the nucleolus Localized in the nucleolus during interphase and to the perichromosomal sheath during mitosis. Does not colocalize in the cytoplasm with GW182 in P-bodies. May translocate to the nucleolus upon early embryonic development (By similarity). Colocalizes with NPM1 during interphase By late prophase, metaphase, anaphase and telophase, associates with the chromosome periphery. By telophase localizes to NPB.
Tissue Location	Expressed in the crypts of Lieberkuhn of the intestine and in intestinal neoplasia (at protein level)

Background

This gene encodes a nucleolar protein that contains six RNA-binding motifs. The encoded protein may be involved in regulating ribosome biogenesis. Multiple alternatively spliced variants, encoding the same protein, have been identified.[provided by RefSeq, Apr 2009],

Images



Western blot analysis of lysates from AD293 cells, primary antibody was diluted at 1:1000, 4°over night

Please note: All products are 'FOR RESEARCH USE ONLY. NOT FOR USE IN DIAGNOSTIC OR THERAPEUTIC PROCEDURES'.