

# KLP6 Rabbit Polyclonal Antibody

KLP6 Rabbit Polyclonal Antibody

Catalog # AP93408

## Product Information

|                   |                         |
|-------------------|-------------------------|
| Application       | WB                      |
| Primary Accession | <a href="#">B7ZC32</a>  |
| Reactivity        | Rat, Human, Mouse       |
| Host              | Polyclonal, Rabbit, IgG |
| Clonality         | Polyclonal              |
| Calculated MW     | 108254                  |

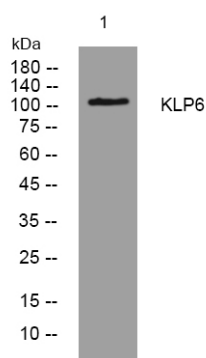
## Additional Information

|                    |   |
|--------------------|---|
| Other Names        | Kinesin-like protein KIF28P, Kinesin-like protein 6, KIF28P, KLP6 |
| Dilution           | WB~~1:1000  |
| Storage Conditions | -20°C   |

## Protein Information

|                   |  |
|-------------------|--|
| Name              | KIF28P   |
| Synonyms          | KLP6   |
| Function          | Microtubule-dependent motor protein required for mitochondrion morphology and transport of mitochondria in neuronal cells. |
| Cellular Location | Mitochondrion membrane; Peripheral membrane protein  |

## Images



Western blot analysis of lysates from MCF-7 cells, primary antibody was diluted at 1:1000, 4° over night

Please note: All products are 'FOR RESEARCH USE ONLY. NOT FOR USE IN DIAGNOSTIC OR THERAPEUTIC PROCEDURES'.