

# S26A8 Rabbit Polyclonal Antibody

S26A8 Rabbit Polyclonal Antibody

Catalog # AP93406

## Product Information

---

Application	WB
Primary Accession	<a href="#">Q96RN1</a>
Reactivity	Human, Mouse
Host	Polyclonal, Rabbit, IgG
Clonality	Polyclonal
Calculated MW	109006

## Additional Information

---

Gene ID	116369
Other Names	Testis anion transporter 1, Anion exchange transporter, Solute carrier family 26 member 8, SLC26A8 {ECO:0000312   EMBL:AAK95666.1}
Dilution	WB~~1:1000
Storage Conditions	-20°C

## Protein Information

---

Name	SLC26A8 {ECO:0000312   EMBL:AAK95666.1}
Function	Antiporter that mediates the exchange of sulfate and oxalate against chloride ions across a membrane (PubMed: <a href="#">11278976</a> , PubMed: <a href="#">11834742</a> ). Stimulates anion transport activity of CFTR (PubMed: <a href="#">22121115</a> , PubMed: <a href="#">23582645</a> ). May cooperate with CFTR in the regulation of chloride and bicarbonate ions fluxes required for activation of the ADCY10/PKA pathway during sperm motility and sperm capacitation (By similarity). May play a role in sperm tail differentiation and motility and hence male fertility (By similarity).
Cellular Location	Membrane; Multi- pass membrane protein. Note=Located at both the annulus and the equatorial segment of the human sperm head
Tissue Location	Expression observed exclusively in testis, restricted to the meiotic phase of the germ cell (PubMed:11834742) Abundant expression located in the seminiferous tubules, concentrated on the luminal side of the tubuli harboring the spermatocytes and spermatids (PubMed:11278976, PubMed:11834742)

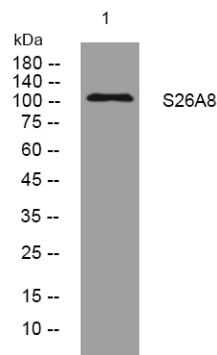
## Background

---

This gene encodes a member of the SLC26 gene family of anion transporters. Family members are well conserved in gene structure and protein length yet have markedly different tissue expression patterns. The expression of this gene appears to be restricted to spermatocytes. Alternatively spliced transcript variants that encode different isoforms have been described. [provided by RefSeq, Jul 2010],

## Images

---



Western blot analysis of lysates from U2OS cells, primary antibody was diluted at 1:1000, 4°over night

Please note: All products are 'FOR RESEARCH USE ONLY. NOT FOR USE IN DIAGNOSTIC OR THERAPEUTIC PROCEDURES'.