

TTLL3 Rabbit Polyclonal Antibody

TTLL3 Rabbit Polyclonal Antibody

Catalog # AP93398

Product Information

Application	WB
Primary Accession	Q9Y4R7
Reactivity	Human, Mouse
Host	Polyclonal, Rabbit, IgG
Clonality	Polyclonal
Calculated MW	87414

Additional Information

Gene ID	26140
Other Names	Tubulin monoglycylase TTLL3, HOTTL, Tubulin--tyrosine ligase-like protein 3, TTLL3 (HGNC:24483)
Dilution	WB~~1:1000
Storage Conditions	-20°C

Protein Information

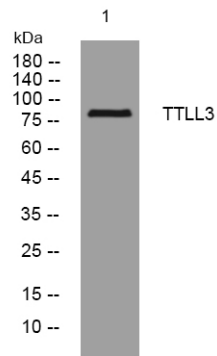
Name	TTLL3 (HGNC:24483)
Function	Monoglycylase which modifies alpha- and beta-tubulin, adding a single glycine on the gamma-carboxyl groups of specific glutamate residues to generate monoglycine side chains within the C-terminal tail of tubulin. Not involved in elongation step of the polyglycylation reaction (By similarity). Preferentially glycyates a beta-tail peptide over the alpha-tail, although shifts its preference toward alpha-tail as beta-tail glutamylation increases (By similarity). Competes with polyglutamylases for modification site on beta-tubulin substrate, thereby creating an anticorrelation between glycylation and glutamylation reactions (By similarity). Together with TTLL8, mediates microtubule glycylation of primary and motile cilia, which is essential for their stability and maintenance (By similarity). Involved in microtubule glycylation of primary cilia in colon which controls cell proliferation of epithelial cells and plays an essential role in colon cancer development (PubMed: 25180231). Together with TTLL8, glycyates sperm flagella which regulates axonemal dynein motor activity, thereby controlling flagellar beat, directional sperm swimming and male fertility (By similarity).
Cellular Location	Cytoplasm, cytoskeleton. Cell projection, cilium {ECO:0000250 UniProtKB:A4Q9E5}. Cytoplasm, cytoskeleton, cilium axoneme {ECO:0000250 UniProtKB:A4Q9E5}. Cytoplasm, cytoskeleton, flagellum

axoneme {ECO:0000250|UniProtKB:A4Q9E5}

Tissue Location

Expressed in brain, heart, kidney, testis, liver, lung, muscle, spleen, trachea and colon.

Images



Western blot analysis of lysates from HpeG2 cells,
primary antibody was diluted at 1:1000, 4° over night

Please note: All products are 'FOR RESEARCH USE ONLY. NOT FOR USE IN DIAGNOSTIC OR THERAPEUTIC PROCEDURES'.