

CX068 Rabbit Polyclonal Antibody

CX068 Rabbit Polyclonal Antibody

Catalog # AP93394

Product Information

Application	IHC, IF
Primary Accession	A6NGZ8
Reactivity	Human, Mouse
Host	Polyclonal, Rabbit,IgG
Clonality	Polyclonal
Calculated MW	10777

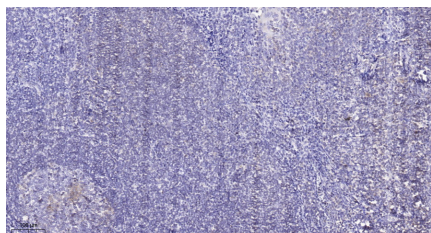
Additional Information

Gene ID	100132963
Other Names	Small integral membrane protein 9, SMIM9, CXorf68
Dilution	IHC~~1:100~500 IF~~1:50~200
Storage Conditions	-20°C

Protein Information

Name	SMIM9
Synonyms	CXorf68
Cellular Location	Cell membrane; Single-pass type I membrane protein

Images



Immunohistochemical analysis of paraffin-embedded human tonsil. 1, Tris-EDTA,pH9.0 was used for antigen retrieval. 2 Antibody was diluted at 1:200(4° overnight.3,Secondary antibody was diluted at 1:200(room temperature, 45min).