

# CAN15 Rabbit Polyclonal Antibody

CAN15 Rabbit Polyclonal Antibody

Catalog # AP93390

## Product Information

---

|                   |                         |
|-------------------|-------------------------|
| Application       | WB                      |
| Primary Accession | <a href="#">O75808</a>  |
| Reactivity        | Human, Mouse            |
| Host              | Polyclonal, Rabbit, IgG |
| Clonality         | Polyclonal              |
| Calculated MW     | 117314                  |

## Additional Information

---

|                    |   |
|--------------------|---|
| Gene ID            | 6650  |
| Other Names        | Calpain-15, 3.4.22.-, Small optic lobes homolog, CAPN15, SOLH |
| Dilution           | WB~~1:1000  |
| Storage Conditions | -20°C   |

## Protein Information

---

|                 |   |
|-----------------|---|
| Name            | CAPN15  |
| Synonyms        | SOLH  |
| Tissue Location | Widely expressed with higher expression in brain. |

## Background

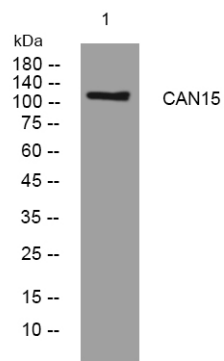
---

This gene encodes a protein containing zinc-finger-like repeats and a calpain-like protease domain. The encoded protein may function as a transcription factor, RNA-binding protein, or in protein-protein interactions during visual system development. [provided by RefSeq, Jul 2008],

## Images

---

Western blot analysis of lysates from HpeG2 cells,  
primary antibody was diluted at 1:1000, 4° over night



Please note: All products are 'FOR RESEARCH USE ONLY. NOT FOR USE IN DIAGNOSTIC OR THERAPEUTIC PROCEDURES'.