

KRA51 Rabbit Polyclonal Antibody

KRA51 Rabbit Polyclonal Antibody

Catalog # AP93388

Product Information

Application	WB
Primary Accession	Q6L8H4
Reactivity	Human, Mouse
Host	Polyclonal, Rabbit,IgG
Clonality	Polyclonal
Calculated MW	24194

Additional Information

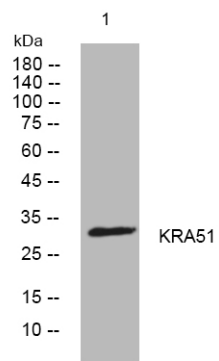
Gene ID	387264
Other Names	Keratin-associated protein 5-1, Keratin, cuticle, ultrahigh sulphur 1-like, Keratin-associated protein 5.1, Ultrahigh sulfur keratin-associated protein 5.1, KRTAP5-1, KAP5.1, KRN1L, KRTAP5.1
Dilution	WB~~1:1000
Storage Conditions	-20°C

Protein Information

Name	KRTAP5-1
Synonyms	KAP5.1, KRN1L, KRTAP5.1
Function	In the hair cortex, hair keratin intermediate filaments are embedded in an interfilamentous matrix, consisting of hair keratin- associated protein (KRTAP), which are essential for the formation of a rigid and resistant hair shaft through their extensive disulfide bond cross-linking with abundant cysteine residues of hair keratins. The matrix proteins include the high-sulfur and high-glycine-tyrosine keratins.
Tissue Location	Expressed in hair root but not in skin. Expressed also in lung, pancreas, ovary, testis.

Images

Western blot analysis of lysates from U2OS cells, primary antibody was diluted at 1:1000, 4°over night



Please note: All products are 'FOR RESEARCH USE ONLY. NOT FOR USE IN DIAGNOSTIC OR THERAPEUTIC PROCEDURES'.