

LCE3E Rabbit Polyclonal Antibody

LCE3E Rabbit Polyclonal Antibody

Catalog # AP93381

Product Information

Application	IHC, IF
Primary Accession	Q5T5B0
Reactivity	Rat, Human, Mouse
Host	Polyclonal, Rabbit, IgG
Clonality	Polyclonal
Calculated MW	9507

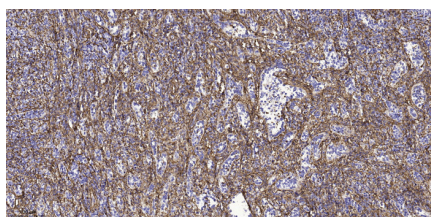
Additional Information

Gene ID	353145
Other Names	Late cornified envelope protein 3E, Late envelope protein 17, LCE3E, LEP17
Dilution	IHC~~1:100~500 IF~~1:50~200
Storage Conditions	-20°C

Protein Information

Name	LCE3E
Synonyms	LEP17
Function	Precursors of the cornified envelope of the stratum corneum.
Tissue Location	Skin-specific. Expression was readily detected in adult trunk skin, adult arm skin, fetal skin, penial skin, vulva, esophagus and tongue. Not expressed in the cervix, rectum, lung, colon, or placenta.

Images



Immunohistochemical analysis of paraffin-embedded human spleen tissue. 1, primary Antibody was diluted at 1:200 (4° overnight). 2, Sodium citrate pH 6.0 was used for antigen retrieval (>98°C, 20min). 3, Secondary antibody was diluted at 1:200

Please note: All products are 'FOR RESEARCH USE ONLY. NOT FOR USE IN DIAGNOSTIC OR THERAPEUTIC PROCEDURES'.