

CBY3 Rabbit Polyclonal Antibody

CBY3 Rabbit Polyclonal Antibody
Catalog # AP93374

Product Information

Application	WB
Primary Accession	A6NI87
Reactivity	Human, Mouse
Host	Polyclonal, Rabbit,IgG
Clonality	Polyclonal
Calculated MW	27343

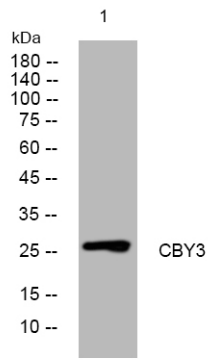
Additional Information

Gene ID	646019
Other Names	Protein chibby homolog 3, CBY3
Dilution	WB~~1:1000
Storage Conditions	-20°C

Protein Information

Name	CBY3
Function	Plays a key role in the correct positioning of the annulus, a septin-based ring structure in the sperm flagellum, serving both as a physical barrier and a membrane diffusion barrier that separates the midpiece (MP) from the principal piece (PP) (By similarity). This positioning is essential for proper sperm motility and function (By similarity). CBY3 interacts with CIBAR1 to form a complex which localizes to the curved membrane region of the flagellar pocket (By similarity). By doing so, may provide stability and rigidity to the periannular membrane to prevent membrane deformation (By similarity). This function is crucial for halting annulus migration at the proximal end of the fibrous sheath-containing PP (By similarity).
Cellular Location	Cell projection, cilium, flagellum {ECO:0000250 UniProtKB:Q9CVN6}. Note=Localizes to the annulus at the junction between the midpiece (MP) and principal piece (PP) of the sperm flagellum. {ECO:0000250 UniProtKB:Q9CVN6}

Images



Western blot analysis of lysates from HEK293 cells,
primary antibody was diluted at 1:1000, 4° over night

Please note: All products are 'FOR RESEARCH USE ONLY. NOT FOR USE IN DIAGNOSTIC OR THERAPEUTIC PROCEDURES'.