

RMI2 Rabbit Polyclonal Antibody

RMI2 Rabbit Polyclonal Antibody

Catalog # AP93370

Product Information

Application	WB
Primary Accession	Q96E14
Reactivity	Human, Mouse
Host	Polyclonal, Rabbit, IgG
Clonality	Polyclonal
Calculated MW	15865

Additional Information

Gene ID	116028
Other Names	RecQ-mediated genome instability protein 2, hRMI2, BLM-associated protein of 18 kDa, BLAP18, RMI2, C16orf75
Dilution	WB~~1:1000
Storage Conditions	-20°C

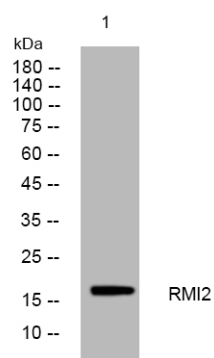
Protein Information

Name	RMI2
Synonyms	C16orf75
Function	Essential component of the RMI complex, a complex that plays an important role in the processing of homologous recombination intermediates. It is required to regulate sister chromatid segregation and to limit DNA crossover. Essential for the stability, localization, and function of BLM, TOP3A, and complexes containing BLM. In the RMI complex, it is required to target BLM to chromatin and stress-induced nuclear foci and mitotic phosphorylation of BLM.
Cellular Location	Nucleus. Note=Colocalizes with BLM at nuclear DNA repair foci

Background

RMI2 is a component of the BLM (RECQL3; MIM 604610) complex, which plays a role in homologous recombination-dependent DNA repair and is essential for genome stability (Xu et al., 2008 [PubMed 18923082]).[supplied by OMIM, Nov 2008],

Images



Western blot analysis of lysates from HeLa cells, primary antibody was diluted at 1:1000, 4° over night

Please note: All products are 'FOR RESEARCH USE ONLY. NOT FOR USE IN DIAGNOSTIC OR THERAPEUTIC PROCEDURES'.